



Course A - Supplementary Sailings Instructions

Event: KSSS Olympic Class Regatta

Class: Europe Dinghy, OK Dinghy

Date: 7-8 October 2017

Organizer: Royal Swedish Yacht Club, KSSS

1. Time schedule

1.1 Dates of racing

Day	Date	The planned time of the warning signal for the first race each day is
Saturday	2017-10-07	Time: 10:55
Sunday	2017-10-08	Time: 09:55

On the last scheduled day of racing no warning signal will be made after 14:55.

1.2 To alert boats that a race or sequence of races will begin soon, the orange starting line flag will be displayed with one sound at least five minutes before a warning signal is made.

1.3 Five races for both classes are scheduled during the regatta.

1.4 The race committee will try to set lay the course so that a race will take approximately 45 minutes to sail.

2. Location of the race office and of the flagpole

2.1 The race office and noticeboard is located at KSSS clubhouse in Saltsjöbaden.

2.2 Signals made ashore will be displayed at flagpole next to Sjövillan.

3. Marks

3.1 The rounding marks are white inflatable marks.

The start mark is flag buoy with an orange flag.

The finish line is between two blue flags on either a boat or flag buoy (note that this alters the course map below).



- 3.2 When changing the course, the original mark will be moved. This changes App. S 10.1.

4. Time limits

- 4.1 Race Time Limit
Time limit for the first boat to sail the course and finish is 80 minutes.
- 4.2 Finishing Window
Finishing window is 20 minutes.

5. Changes and additions to RRS appendix S

- 5.1 The course. See the Attachment A.
- 5.2 The class flag for Europe Class is a white flag with Europe Class insignia and class flag **O** for OK dinghy, this changes App. S 6.1.
- 5.3 The Race Committee will not show the course as stated in App. S 7.1.
This changes App. S 7.1.
- 5.4 A boat starting later than 5 minutes after her starting signal will be scored Did Not Start. This changes RRS App A4.2.
- 5.5 RRS App P applies with the following changes. RRS P 2.3 is not valid. In RRS P2.2 the heading "Second penalty" is changed to "Second and subsequent penalties" and the text "penalized a second time" is changed to "penalized a second or subsequent time".
- 5.6 Rules for support persons
- a) Support person shall launch, berth and take up his craft (coach boat) as directed by the organizer.
 - b) Support person shall follow RRS 1, 2 and 55 and not subject a competitor to risk breaking RRS 41.
 - c) During the race, a support person shall not be closer to a competitor than 50 meters, except when the support person acting under RRS 1.1.

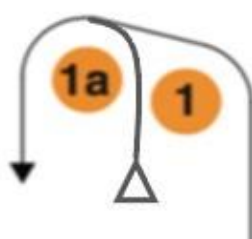


Attachment A

Course A

OK-dinghy Start-1-1a-4s/4b-1a-4b-finish.

Europe Class Start-1-1a-4s/4b-1-1a-4b-finish.



Observe: OK dinghy
2nd upwind to mark 1a

