

A dramatic sunset or sunrise over a body of water. The sky is filled with dark, layered clouds, and a bright orange and yellow glow is visible along the horizon line. The water in the foreground is dark and textured with small waves.

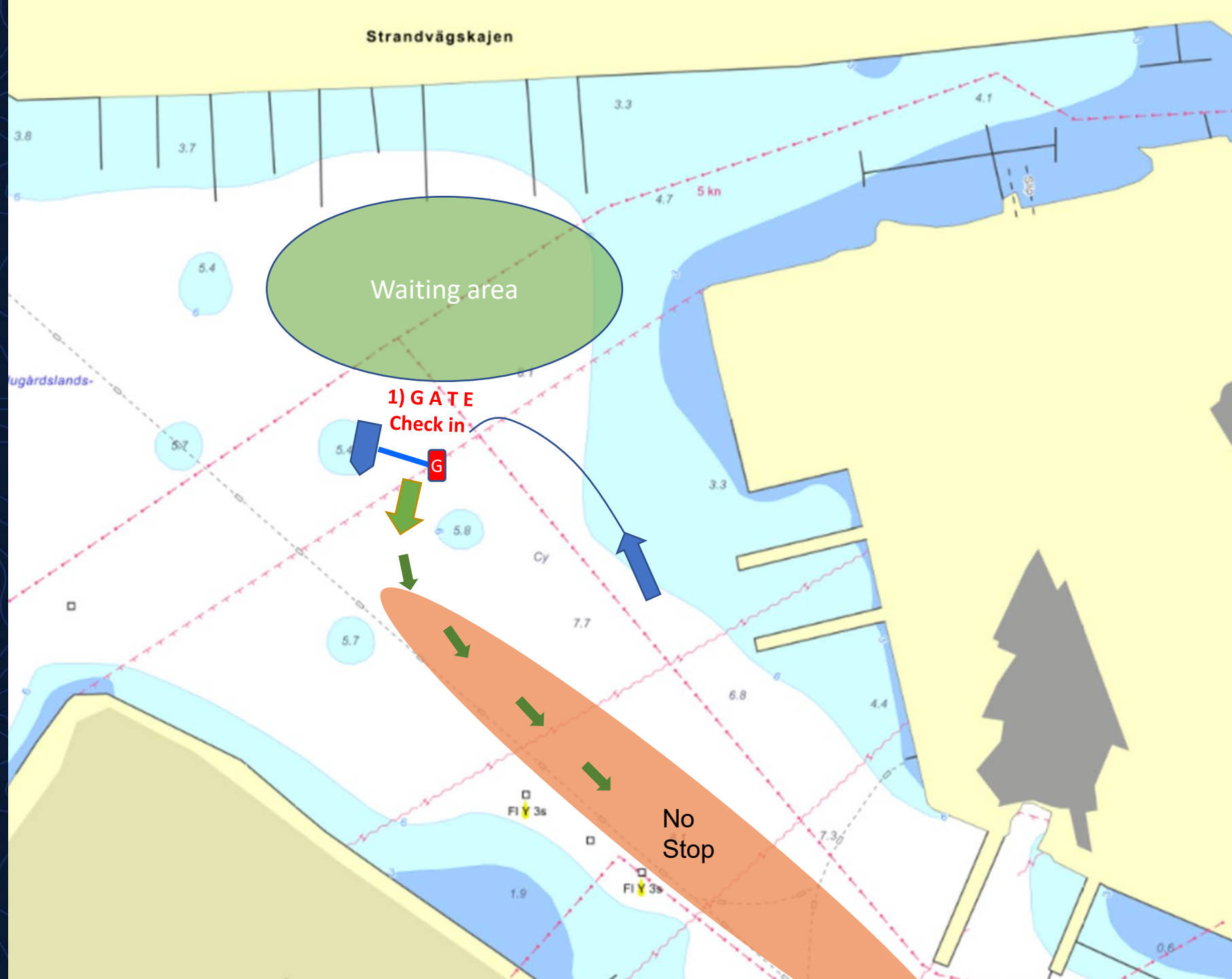
# **Starting area and procedure**



# Check in Gate

Leave the harbor earliest **1h**  
**15 min** before your start

1. Check In Gate  
**40 min** before your start

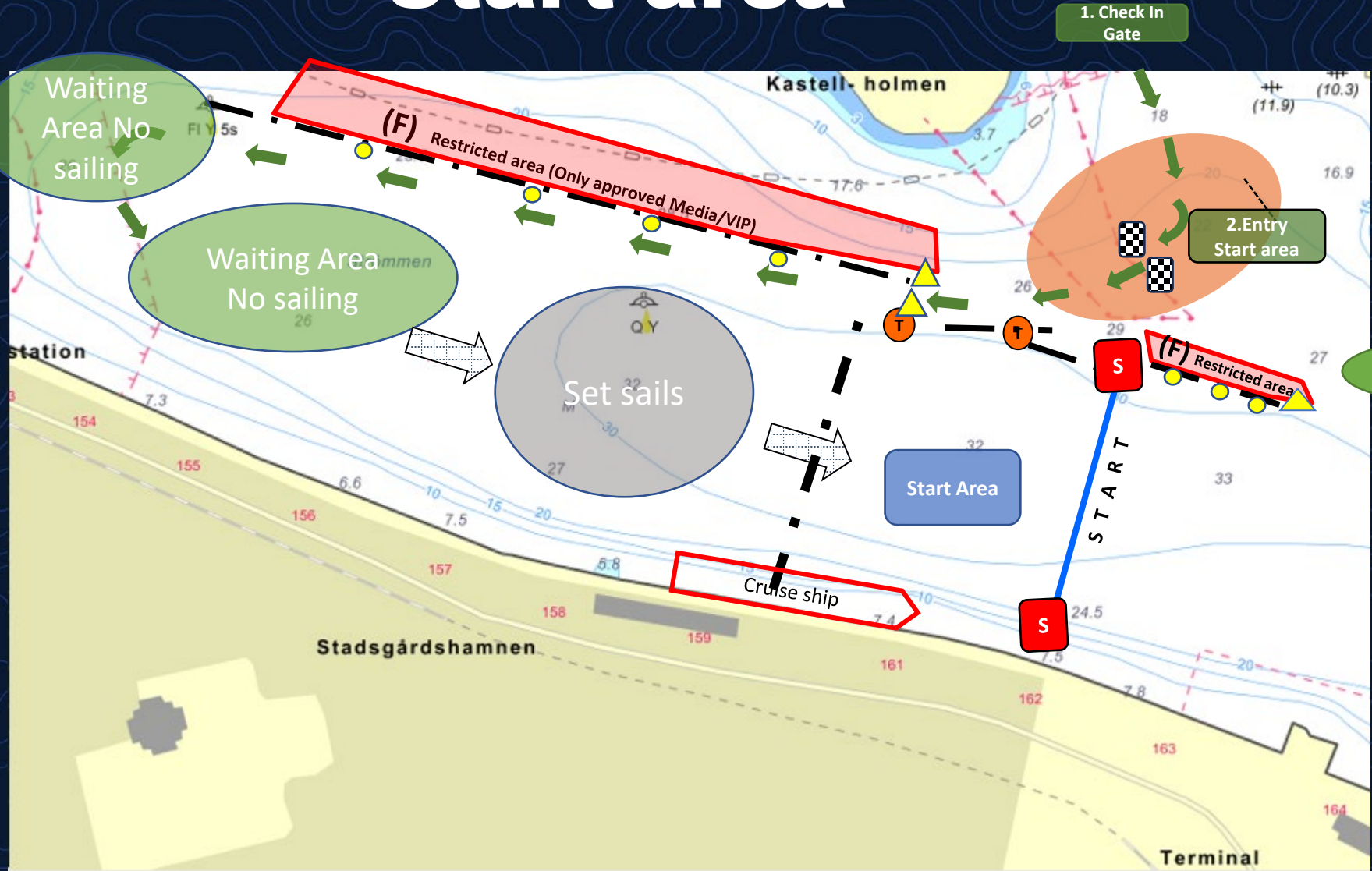


# Start area

2. Enter Starting area

3. Waiting area  
Set sails **20** min before  
your start

4. Start box  
Enter **10** min before  
your start





- Starting vessel "Katieca"
- VHF channel 72 (starting procedure)
- VHF channel 77 (between competing boats)
- Commercial traffic
- Safety
- Navigation

# Restricted area

