



Event: 12 Metre Pre-Worlds 2021  
Date: August 3<sup>rd</sup> – 8<sup>th</sup> 2021.  
Organizer: The Royal Swedish Yacht Club KSSS, and the International Twelve Metre Association (ITAM).

## Supplementary Sailings Instructions

1. Location of the race office and of the flagpole
  - 1.1 Notices to competitors will be posted on the official notice board located at [Official Notice Board, ONB](#)
  - 1.2 The regatta office is located at the KSSS club houses, Saltsjöbaden and Sandhamn.
  - 1.3 Signals made ashore will be displayed at the flagpole outside the regatta offices, Saltsjöbaden and Sandhamn.
  - 1.4 On the water, the race committee intends to monitor and communicate with competitors on VHF radio channel 67.
  
2. Time schedule
  - 2.1  
Tuesday August 3<sup>rd</sup> Saltsjöbaden  
14:00 – 17:00 Registration  
17:00 Cocktail (jacket and tie) Grand Hotel Saltsjöbaden  
  
Wednesday August 4<sup>th</sup> Saltsjöbaden/Sandhamn  
09:00 – 10:30 Registration  
09:30 Skippers meeting at the stairs in front of Grand Hotel Saltsjöbaden. The skippers meeting will be recorded and published at the ONB.  
12:00 First warning signal, distance race  
Saltsjöbaden-Sandhamn (approx. 4h)  
18:00 – 21:00 Aftersail with BBQ mingel food and drinks Lökholmen  
  
Thursday August 5<sup>th</sup> Sandhamn  
09:30 Skippers meeting (place/online TBD)  
11:30 First warning signal, W/L (2-3 races)

Friday August 6<sup>th</sup> Sandhamn

- 09:30 Skippers meeting (place/online TBD)
- 11:00 First warning signal, W/L (2-3 races)

Saturday August 7<sup>th</sup> Sandhamn

- 09:00 Skippers meeting (place/online TBD)
- 11:00 First warning signal, distance race (approx. 5h)
- 18:00 Prizegiving ceremony
- 19:00 Regatta Dinner

Sunday August 8<sup>th</sup> Sandhamn

- 10:00 Unofficial skippers meeting (12mR)  
Departure transport to Helsinki

There will be no warning signal given after 14:00 on the last day of the regatta.

- 2.2 **Boats may be required to participate in 'Sail troughs' or other showcase events.**
- 2.3 Up to eight races are scheduled including two distance races and six course races. Up to 3 races can be sailed per race day.
- 2.4 The inshore courses will be "Windward/Leeward courses", with an off-set mark at the Windward mark and a gate as the Leeward mark. The diagram in Attachment 1 shows the W/L course.
- 2.5 The race committee will try to set the courses so that a windward-leeward race will take approximately 60 minutes to sail, and the distance course will take approximately 3-5 hours to sail.
- 2.6 **When flag AP is displayed ashore, '1 minute' is replaced with 'not less than 60 minutes' in Race Signals AP.**
- 3. Changes and additions to RRS appendix S
  - 3.2 The Race committee will not show the course as stated in App SF 7.1. This changes App SF 7.1
  - 3.3 A boat starting later than 15 minutes after her starting signal will be scored Did Not Start. This changes RRS Appendix A4.
  - 3.4 **If any part of a boat's hull is on the course side of the starting line at her starting signal and she is identified, the Race Committee may in addition to RRS 29 as a service, and if possible call her sail number on VHF channel 67. Failure to do so will not be grounds for redress.**
  - 3.5 RRS 40.1 applies at all times while a boat is afloat. However, it does not apply for a keelboat when she is made fast or moored or if the competitor is below deck. A boat breaking this rule may be warned or penalized at the discretion of the protest committee.

- 3.6 First sentence in App SF 13.1 is changed to: Hearing request forms are available at the race office or on the [Official Notice Board, ONB](#).
- 3.7 The protest time limit is 30 minutes and begins when the boats have had reasonable time to return to the harbour after the last race of the day. The end of the protest time will be posted on the [Official Notice Board, ONB](#) This changes App. SF 13.2.
- 3.8 The Swedish government and the Public Health Authority have issued rules and regulations in relation to the Corona pandemic. Competitors shall respect these rules and recommendations as directed by the Organizing Authority or Race Committee in either Notice of Race, Sailing Instructions or orally. A competitor or crew that does not comply with this rule, may be penalized by the Protest Committee as a discretionary penalty (DP). Rule 36 does not apply for a penalty under this rule.

## Part 2 Windward/Leeward Races

### 4. Marks

- 4.1 The rounding marks are White.  
The starting marks will be race committee vessels at the starboard end of the starting lines and race committee vessels or spar buoy with orange flags at the port end.  
Finishing marks will be race committee vessels and spar buoys with blue flags.
- 4.2 When changing the course, the original mark will be moved.  
Mark 2p / 2s gate may be replaced by a single mark to be left to port.  
This changes AppSF 10.

### 5. Time limits

- 5.1 Time limit for the first boat to sail the course and finish is 120 minutes.  
Time limit for the first boat to pass Mark 1 is 30 minutes.  
Finishing window is 45 minutes.

## Part 3 Distance Races

### 6. Marks

- 6.1 The rounding marks are: either of existing navigational, hydrographical and/or inflatable marks. Positions in latitude and longitude (WGS84 DDM) are approximate.  
New rounding marks when changing the course are GPS (WGS84 DDM) waypoints.

The starting marks will be race committee vessels at the starboard end of the starting lines and race committee vessels or spar buoys with orange flags at the port end.

The finish mark is a spare buoy with a Blue flag and a race committee boat with a blue flag. When Skanskobb is used the KSSS flagpole on Skanskobb and a spar buoy with a blue flag will be used as a finishing line. Alternatively, two black and white checker-coloured buoys approx. in line with a flagpole with KSSS pennant hoisted at Skanskobb will be used constituting the finishing line.

## 7. Time limits

7.1 Boats failing to finish before 18:00 each distance race day, will be scored Did not Finish (DNF) without a hearing. This changes RRS 35.

## 8. Changes and additions to RRS appendix S

8.1 The distance race on Wednesday August 4<sup>th</sup> starts close to Saltsjöbaden and runs in the archipelago to Sandhamn. The distance race on Saturday August 7<sup>th</sup> starts in the vicinity to Sandhamn and runs along the coastline and in the sea east of Sandhamn and finishes in Sandhamn. This race will be coordinated with the Sandhamns Regattan Classic Classes.

The distance courses will be presented during the daily Skippers Meeting and be posted on the online official notice board. The courses may be set around navigational, hydrographical and/or inflatable marks. The courses to be sailed will be posted no later than 19.00 on 3<sup>rd</sup> and 6<sup>th</sup> of August respectively.

8.2 The Race committee will set up a Race Control during the distance race in order to follow the race. The Race Control monitor VHF channel 67, and phone number +46(0)76-7645303.

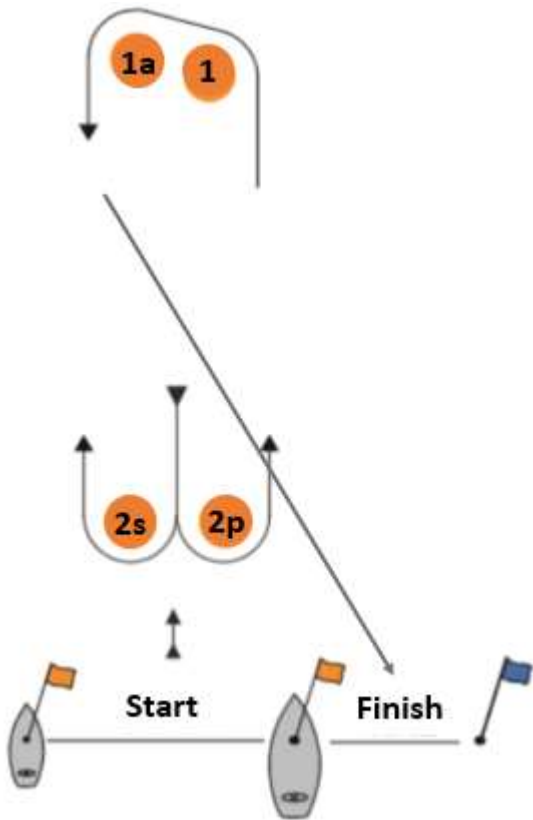
8.3 If you are in distress or if you have an urgent need of medical support, call Sweden Rescue on VHF channel 16.

8.6 The person in charge of a boat retiring from the race shall and is obliged to notify the Race Control immediately upon retirement by phone number +46(0)76-7645303.

8.7 A boat not starting shall inform the Race Office without delay.

8.8 Boats equipped with AIS, are asked to have it in active mode (transmitting) when racing.

## Attachment 1 – Windward-leeward course



### 2 laps

Start – 1-1a- 2s/2p – 1-1a – finish

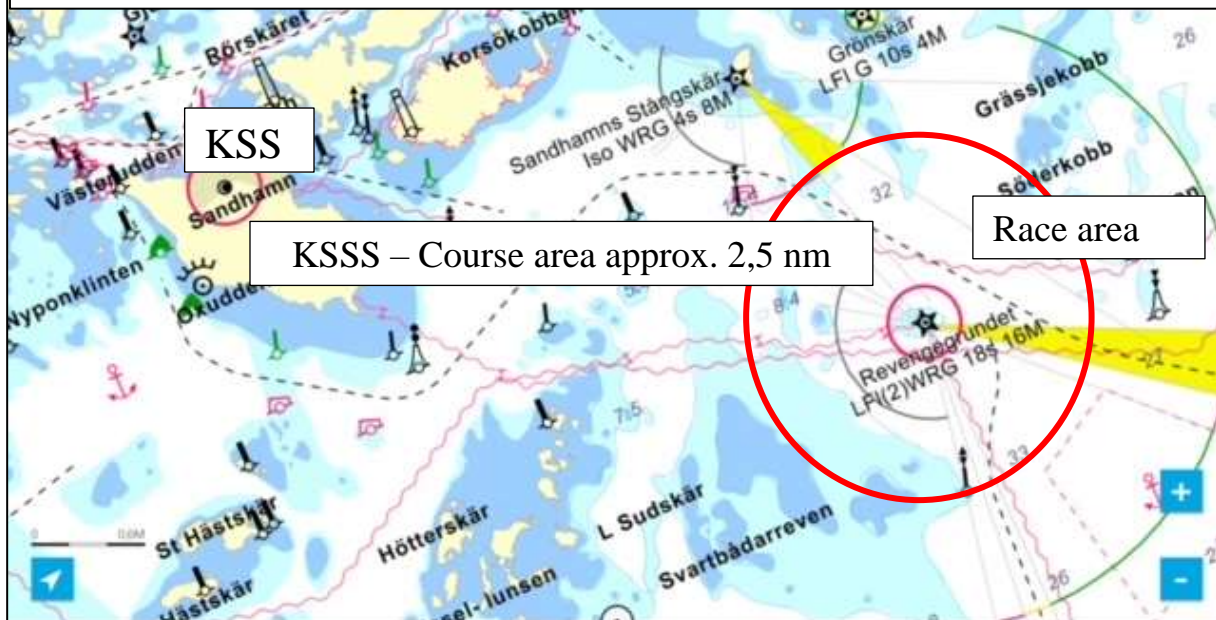
### 3 laps (code flag 3)

Start – 1-1a- 2s/2p – 1-1a - 2s/2p – 1-1a – finish

## Attachment 2 – Course areas



Course area on 5-6<sup>th</sup> of August



Starting area for the distance race on 4<sup>th</sup> of August

