



  
**gotland**  
OFFSHORE  
RACE 2025 **run**t

**SAILING  
INSTRUCTIONS**  
**GOTLAND RUNT  
OFFSHORE RACE**

The Royal Swedish Yacht Club



# **SAILING INSTRUCTIONS**

## **Gotland Runt Offshore Race**

**Date:** June 29, 2025

**Organizer:** The Royal Swedish Yacht Club, KSSS

### **1 CHANGES TO SAILING INSTRUCTIONS**

- 1.1 Changes to Sis, if any will be posted on the Official Notice Board, "ONB" online at <https://www.ksss.se/gotlandrunt/deltagare/official-notice-board/> no later than 20:00 Saturday June 28, 2025.

### **2 COMMUNICATIONS WITH COMPETITORS**

- 2.1 Notices to competitors will be posted on the ONB. Messages to competitors may also be transmitted via SMS to the registered skipper on each boat.
- 2.2 The race committee and race office can be reached by e-mail at [raceoffice@ksss.se](mailto:raceoffice@ksss.se) or by phone +46 (0)703065157  
If you retire from the race, see SI 14.4
- 2.3 During the starting sequence, the race committee intends to communicate with competitors on VHF radio channel 72.  
Competitors are not allowed to call the Race Committee or transmit on VHF channel 72 during any starting sequence = during the time from the first warning signal to the last start signal of the day.  
VHF Channel 77 is recommended for boat-to-boat communication between competing boats. The Race Committee will monitor channel 77 during the start.
- 2.5 All boats shall maintain a continuous listening watch on VHF Channel 16 for the duration of their race.
- 2.6 Any actions or non-actions by the Race Committee concerning calls on the VHF radio will not be grounds for redress. This changes RRS 61.4(b)(1).

### **3 SIGNALS MADE ASHORE**

- 3.1 Signals made ashore will be displayed on the ONB.

### **4 SCHEDULE OF RACES**

- 4.1 The first warning signal will be at 13:55 hours on June 29, 2025, with the starting signal at 14:00 hours. See description of Starting Order on ONB.
- 4.2 Starting program and starting order will be published on the ONB June 28.

## 5 CLASS AND IDENTIFICATION FLAG

- 5.1 Class- and identification flags will be published at the latest in the starting order on ONB June 28.

## 6 RACING AREA

- 6.1 The racing area is between Sandhamn and round the island Gotland in the Baltic Sea. The starting area is situated Southeast of Sandhamn. Special conditions apply for the starting areas. Further information in SI 8, Entering the starting area and Appendix 1, Starting Areas.

## 7 COURSES

- 7.1 Positions in latitude and longitude (WGS84 DDM) are approximate.

### 7.2 Start

Starting line appr. **Southeast Sandhamn** 59°16.313'N 18°53.547'E  
59°15.982'N 18°53.488'E

Final approximately coordinates for starting line will be communicated on ONB, 11.30, on starting day.

Lighthouse **Svängen**, to SB 59°16.196'N 18°58.466'E

Lateral mark **Q(6) LFI W 15s**, to Port  
South Södergrynnan 59°14.599'N 19°3.006'E

Lateral mark **BYB**, to SB 59°24.895'N 19°36.901'E  
Southeast Svenska Högarna

Light buoy north mark **Salvorev**, to SB 58°5.873'N 19°21.722'E  
East of the islands **Fårö** and Gotland

South mark **Hoburgs** Rev, to SB 56°53.411'N 18°7.507'E

Special mark yellow light buoy (FI Y 3s 3M)  
appr. 0,2 NM west of **Visby**, to Port 57°38.599'N 18°17.000'E

**Almagrundet** lighthouse, to Port 59°9.304'N 19°7.565'E

Finishing line SW of **Skanskobb** is defined by  
two positions, and approximately marked by two  
white and black checkered buoys 59°16.937'N 18°56.357'E  
59°16.863'N 18°56.149'E

The length of the full course is appr. 345NM

- 7.3 While racing, boats shall not enter areas declared by local government or other regulations as forbidden to enter, forbidden to pass or otherwise. These areas are obstructions as defined in the RRS Definitions.

## **8 ENTERING THE STARTING AREA**

### **8.1 Start details**

(a) The starting area is situated Southeast Sandhamn. The location, design and details of the starting area are shown in Appendix 1 - Starting Areas.

A boat's starting time, K, will be found in Starting Order on the ONB.

(b) Check-in by passing a gate marked by black/white, checkered buoys. In the direction of West to East. Passage through the gate must be under engine operation. The flags with the boat reporting number and class shall be readable from the gate vessel, and the flags shall if no wind, be stretched out by hand.

(c) You are allowed to sail in the start box, K-10 before your starting time.

- 8.2 Boats shall keep clear of commercial traffic at all times.

## **9 MARKS**

- 9.1 Marks for the starting area are orange buoys, and red buoys for the starting line. The finish line will be marked by checkered black and white buoys.
- 9.2 For other rounding marks, see description of course SI 7.

## 10 THE START

10.1 RRS 26 is changed as follows:

Minutes before starting signal	Visual signal displayed	Visual signal removed	Sound	Meaning
<b>10+</b>	Orange		One	Attention
<b>6</b>	Class flag		No	Class to start
<b>5</b>	White flag with number 5		One	Warning signal
<b>4</b>	Blue flag with number 4	White flag with number 5	One	Preparatory signal
<b>3</b>	White flag with number 3	Blue flag with number 4	One	Three minutes
<b>2</b>	White flag with number 2	White flag with number 3	One	Two minutes
<b>1</b>	Yellow flag with number 1	White flag with number 2	One long	One minute
<b>0</b>		Yellow flag with number 1	One	Start signal
<b>+1</b>		Class flag	No	

10.2 The starting line is between a cylindrical red buoy at the starboard and a cylindrical red buoy at the port-end.

10.3 If any part of a boat's hull is on the course side of the starting line at her starting signal and she is identified, the Race Committee may in addition to RRS 29 as a service, and if possible, call her sail number on VHF channel 72. Failure to do so will not be grounds for redress. This changes RRS 61.4(b)(1).

10.4 A boat that does not start within 10 minutes after her starting signal will be scored Did Not Start without hearing. This changes RRS A5.1 and A5.2.

10.5 After a general recall

a) Subsequent starts will proceed in accordance with the Starting Order that is published in ONB. Any restart(s) will be made after the last scheduled start.

b) Flag First Substitute will be displayed until four minutes after the starting signal.

c) Boats shall wait outside the starting area until they are called back to the starting area for restart, on VHF channel 72 and race official boats showing class flag.

d) This changes Race Signal First Substitute and RRS 29.2

## **11 THE FINISH**

- 11.1 The finishing line will be between two positions (see 7.2) approx. in line with a flagpole with KSSS pennant hoisted at Skanskobb. As a service the line will be shown by two checkered black and white inflatable buoys that will/may not be exact on the finish line positions; buoys not on the exact line position will not be ground for redress.
- 11.2 A boat approaching the finishing line shall make sure the reporting number is visible from starboard side of the finishing line 100 meters before and 100 meters beyond the finishing line, when finishing at night or in bad visibility, the flag and the sail number must be illuminated.
- 11.3 When a boat finishes, she shall report her finish time in accordance with SI 18 Reporting.

## **12 PENALTY SYSTEM**

- 12.1 RRS T1 applies and T1(b) is changed so that the penalty is a 1 % additional time to the elapsed time.
- 12.2 In addition to RRS 60.5(c), a boat may be penalized with an addition of up to 10% of her elapsed time as decided by the Protest Committee.

## **13 HEARING REQUESTS AND REQUESTS FOR REDRESS**

- 13.1 When the display of a red flag is required for a valid protest, the flag shall be displayed minimum 1 hour after the incident. No need to continue to be displayed after the protesting boat has notified or tried to notify the other boat. Aim to display the protest flag when you finish. This changes RRS 60.2(a).
- 13.2 RRS 60.2(a)(1) is changed so that a boat shall also try to inform the other boat of her intention to protest by VHF radio channel 77
- 13.3 Protests or requests for redress shall be written on the hearing request form and following the instructions available on the ONB
- 13.4 For each class, the protest time limit is 90 minutes after the protestor finishes the race. If a boat finishes between 20:00 and 07:00 her protest time limit is extending to 09.00.
- 13.5 Protests received will be published on the ONB. The time and place for hearings will be e-mailed to the parties and posted on the ONB and in accordance with SI 2.1 as follows:

Monday June 30, 16:00

Tuesday July 01, 10:00, 13:00, 16:00

Wednesday July 02, 10:00, 13:00

It is the responsibility of each boat to read the ONB at these times and comply with any call for a protest hearing.

- 13.6 Protests received after 13:00 on Wednesday July 02, will be heard at a later date. Calls for such hearings will be e-mailed to the parties.

## **14 SAFETY REGULATIONS**

- 14.1 Identification flag with the reporting number and class flag will be handed out after completed registration at the Race Office in Sandhamn or Saltsjöbaden (see NOR for opening hours).
- 14.2 In the starting area in Sandhamn, commercial traffic can appear. A boat shall not impede the passage of commercial shipping – see IRPCAS rule 9. In an immediate risk of collision with a commercial vessel, a boat may use her engine to keep clear (see RRS 42.3(i)). If she does so, she shall note the time and place of the incident and the time the engine was used. A boat or the Race Committee may protest her if she may have gained a significant advantage in the race.
- 14.3 If you are in distress or if you have an urgent need of medical support, call Sweden Rescue on VHF channel 16.
- 14.4 The person in charge of a boat retiring from the race shall and is obliged to notify the Race Control immediately upon retirement by calling number +46(0)76-7645303

## **15 REPLACEMENT OF CREW OR EQUIPMENT**

- 15.1 Substitution of competitors is not allowed without prior written approval of the Race Committee.
- 15.2 No person on board shall intentionally leave, except when ill or injured, or to help a person or vessel in danger, or to swim. A person leaving the boat by accident or swimming shall be back in contact with the boat before the crew resumes sailing the boat to the next mark.
- A Crew Member having left when ill or injured, shall not return or be replaced during the race. The Boat must come to a complete stop before an intentional departure. The departure of the Crew Member shall be immediately reported to race control. This changes RRS 48.2.
- 15.3 Substitution of damaged or lost equipment is not allowed unless authorized in writing by the Technical Committee. Requests for substitution shall be made to the Technical Committee at the first reasonable opportunity, which may be after the race.

## **16 OFFICIAL VESSELS**

- 16.1 Official vessels will be identified by flags marked with "Gotland Runt" logo, and additional flags marked with function like, "Jury", "Safety", Media etc.

## **17 BERTHING**

- 17.1 Official event harbor is KSSS Harbours in Sandhamn.

## **18 REPORTING**

- 18.1 A boat shall report the times of the following roundings/passings:

- rounding the lateral mark BYB Southeast to Svenska Högarna
- passing Fårö lighthouse, in true bearing 270°
- rounding the south mark Hoburgs Rev
- rounding the special mark approximately 0,2 NM west of Visby- passing Almagrundet lighthouse
- crossing the finish line SW Skanskobb

18.2 A boat shall via SMS (mobile text message), report passings and rounding's as listed in SI 18.1 to +46(0)70 90 32 04 15 40 (note the long number) and a confirmation SMS will be returned.

18.3 The boat's reporting number shall be used when reporting, not the sail number. A boat shall report: Reporting number, boat's name, passing/rounding mark, and time for passing/rounding.

Send message in format: "Report No | Boat Name | Mark | Time" Example: "009 BALLAD VISBY 13:45:05"

## **19. BOATS NOT STARTING**

19.1 A boat not starting shall inform the Race Office without delay. The entry fee is not refundable.

## **20. RESULTS**

20.1 Results will be posted on the web site [www.gotlandrunt.se](http://www.gotlandrunt.se)

---

KSSS Race Committee June 2025

## APPENDIX 1 – RACE AREAS

### 1. STARTING VESSEL

The starting vessel MS Bamsen V. Marked with a white flag including "Gotland Runt" logo.

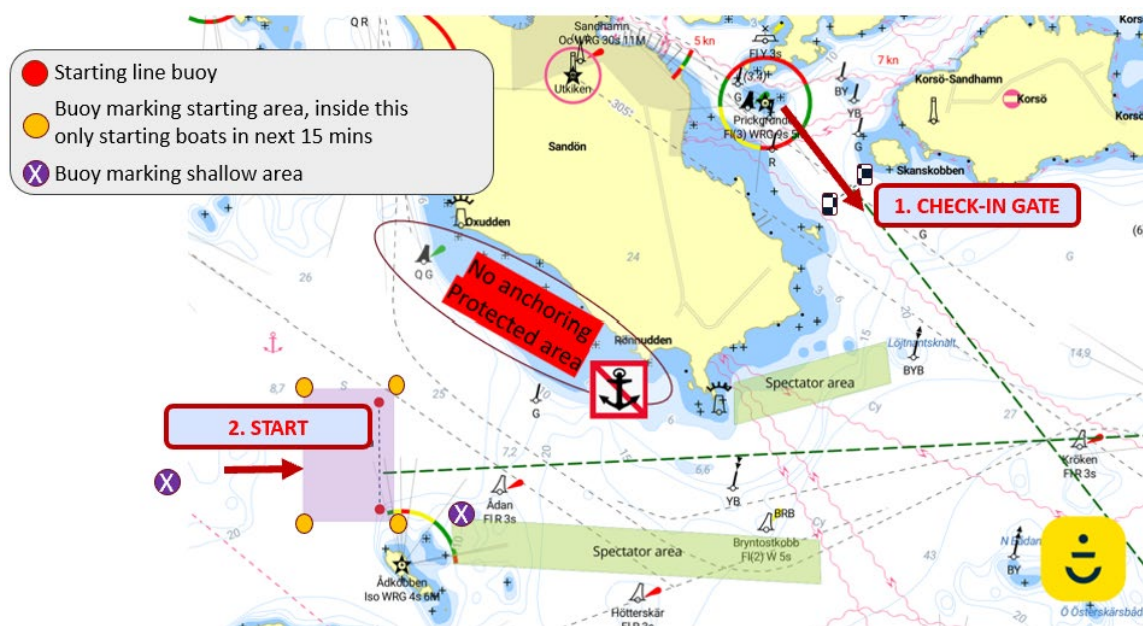


### 2. STARTING AREA

The starting area is situated in Sandhamn (See map on the next page).

1. 12:00-14:30 Pass the check-in gate (1) by engine for mandatory check-in, buoys are black and white checkered.
2. 20 min prior to your start time, be ready to enter the start area but stay out of the way for competitors about to start.
3. 15 min to your start. You are allowed to enter the start area marked with orange buoys.
4. The starting line will consist of red buoys.

#### 2a. Overview



#### 2b. Check-in gate

Close to **Skanskobb**, check-in by passing a gate marked by two white and black checkered buoys

approximately 59°16.937'N 18°56.357'E and 59°16.863'N 18°56.149'E

